

**SIMVASTATIN - simvastatin tablet, film coated**  
**SIMVASTATIN- simvastatin tablet, film coated**  
**Qualient Pharmaceuticals Health LLC**

-----  
**HIGHLIGHTS OF PRESCRIBING INFORMATION**

**These highlights do not include all the information needed to use SIMVASTATIN TABLETS safely and effectively. See full prescribing information for SIMVASTATIN TABLETS.**

**SIMVASTATIN tablets, for oral use Initial U.S. Approval: 1991**

-----  
**RECENT MAJOR CHANGES** -----

Dosage and Administration ( 2.1, 2.2, 2.3, 2.4) 03/2022

Warnings and Precautions ( 5.1, 5.2, 5.3) 03/2022

Contraindications, Pregnancy and Lactation ( 4) Removed 03/2022

-----  
**INDICATIONS AND USAGE** -----

Simvastatin tablets are an HMG-CoA reductase inhibitor indicated : ( 1)

- To reduce the risk of total mortality by reducing risk of coronary heart disease death, non-fatal myocardial infarction and stroke, and the need for coronary and non-coronary revascularization procedures in adults with established coronary heart disease, cerebrovascular disease, peripheral vascular disease, and/or diabetes, who are at high risk of coronary heart disease events.
- As an adjunct to diet to reduce low-density lipoprotein cholesterol (LDL-C):
  - o In adults with primary hyperlipidemia.
  - o In adults and pediatric patients aged 10 years and older with heterozygous familial hypercholesterolemia (HeFH).
- As an adjunct to other LDL-C-lowering therapies to reduce LDL-C in adults with homozygous familial hypercholesterolemia (HoFH).
- As an adjunct to diet for the treatment of adults with:
  - o Primary dysbetalipoproteinemia.
  - o Hypertriglyceridemia.

-----  
**DOSAGE AND ADMINISTRATION** -----

- *Important Dosage and Administration Information:* ( 2.1)
  - o Take simvastatin tablets orally once daily in the evening.
  - o Maximum recommended dosage is simvastatin tablets 40 mg once daily. simvastatin tablets 80 mg daily dosage is restricted to patients who have been taking simvastatin tablets 80 mg daily chronically (e.g., for 12 months or more) without evidence of muscle toxicity.
  - o For patients that require a high-intensity statin or are unable to achieve their LDL-C goal receiving simvastatin tablets 40 mg daily, prescribe alternative LDL-C lowering treatment.
  - o Assess LDL-C when clinically appropriate, as early as 4 weeks after initiating, and adjust the dosage if necessary.
- *Adults:* Recommended dosage is 20 mg to 40 mg once daily. ( 2.2)
- *Pediatric Patients Aged 10 Years and Older with HeFH:* Recommended dosage is 10 mg to 40 mg once daily. ( 2.3)
- *Patients with Severe Renal Impairment:* Recommended starting dosage is simvastatin 5 mg once daily. Simvastatin tablets are not available in a 5 mg strength. Use another simvastatin product to initiate dosing in such patients. ( 2.4, 8.6)
- See full prescribing information for simvastatin tablets dosage modifications due to drug interactions. ( 2.5)

-----  
**DOSAGE FORMS AND STRENGTHS** -----

Tablets: 5 mg; 10 mg; 20 mg; 40 mg; 80 mg ( 3)

-----  
**CONTRAINDICATIONS** -----

- Concomitant use of strong CYP3A4 inhibitors (select azole anti-fungals, macrolide antibiotics, anti-viral medications, and nefazodone) ( 4, 7.1)
- Concomitant use of cyclosporine, danazol or gemfibrozil ( 4, 7.1)
- Acute liver failure or decompensated cirrhosis ( 4, 5.3)
- Hypersensitivity to simvastatin or any excipient in simvastatin ( 4, 6.2)

-----  
**WARNINGS AND PRECAUTIONS** -----

- *Myopathy and Rhabdomyolysis:* Risk factors include age 65 years or greater, uncontrolled hypothyroidism, renal impairment, concomitant use with certain other drugs, and higher simvastatin dosage. Chinese patients may be at higher risk for myopathy. Discontinue simvastatin if markedly elevated CK levels occur or myopathy is diagnosed or suspected. Temporarily discontinue simvastatin in patients experiencing an acute or serious condition at high risk of developing renal failure secondary to rhabdomyolysis. Inform patients of the risk of myopathy and rhabdomyolysis when starting or increasing simvastatin dosage. Instruct patients to promptly report unexplained muscle pain, tenderness, or weakness, particularly if accompanied by malaise or fever. ( 5.1, 7.1, 8.5, 8.6, 8.8)

- *Immune-Mediated Necrotizing Myopathy (IMNM)*: Rare reports of IMNM, an autoimmune myopathy, have been reported. Discontinue simvastatin if IMNM is suspected. ( 5.2)
- *Hepatic Dysfunction*: Increases in serum transaminases have occurred, some persistent. Rare reports of fatal and non-fatal hepatic failure have occurred. Consider testing liver enzyme before initiating therapy and as clinically indicated thereafter. If serious hepatic injury with clinical symptoms and/or hyperbilirubinemia or jaundice occurs, promptly discontinue simvastatin. ( 4, 5.3, 8.7)

#### ADVERSE REACTIONS

Most common adverse reactions (incidence  $\geq 5\%$ ) are upper respiratory infection, headache, abdominal pain, constipation, and nausea. ( 6.1)

**To report SUSPECTED ADVERSE REACTIONS, contact Quallent Pharmaceuticals at 1-877-605-7243 or FDA at 1-800-FDA-1088 or [www.fda.gov/medwatch](http://www.fda.gov/medwatch).**

#### DRUG INTERACTIONS

- See full prescribing information for details regarding concomitant use of simvastatin with other drugs or grapefruit juice that increase the risk of myopathy and rhabdomyolysis. ( 2.5, 7.1)
- *Coumarin Anticoagulants*: Obtain INR before simvastatin initiation and monitor INR during simvastatin dosage initiation or adjustment. ( 7.2)
- *Digoxin*: During simvastatin initiation, monitor digoxin levels. ( 7.2)

#### USE IN SPECIFIC POPULATIONS

- *Pregnancy*: May cause fetal harm. ( 4.0, 8.1)
- *Lactation*: Breastfeeding not recommended during treatment with simvastatin. ( 4.0, 8.2)

See 17 for PATIENT COUNSELING INFORMATION.

Revised: 8/2022

---

## FULL PRESCRIBING INFORMATION: CONTENTS\*

### 1 INDICATIONS AND USAGE

### 2 DOSAGE AND ADMINISTRATION

- 2.1 Important Dosage and Administration Information
- 2.2 Recommended Dosage in Adult Patients
- 2.3 Recommended Dosage in Pediatric Patients 10 Years of Age and Older with HeFH
- 2.4 Recommended Dosage in Patients with Renal Impairment
- 2.5 Dosage Modifications Due to Drug Interactions

### 3 DOSAGE FORMS AND STRENGTHS

### 4 CONTRAINDICATIONS

### 5 WARNINGS AND PRECAUTIONS

- 5.1 Myopathy and Rhabdomyolysis
- 5.2 Immune-Mediated Necrotizing Myopathy
- 5.3 Hepatic Dysfunction
- 5.4 Increases in HbA1C and Fasting Serum Glucose Levels

### 6 ADVERSE REACTIONS

- 6.1 Clinical Trials Experience
- 6.2 Postmarketing Experience

### 7 DRUG INTERACTIONS

- 7.1 Drug Interactions that Increase the Risk of Myopathy and Rhabdomyolysis with simvastatin
- 7.2 simvastatin Effects on Other Drugs

### 8 USE IN SPECIFIC POPULATIONS

- 8.1 Pregnancy
- 8.2 Lactation
- 8.4 Pediatric Use
- 8.5 Geriatric Use
- 8.6 Renal Impairment
- 8.7 Hepatic Impairment
- 8.8 Chinese Patients

### 10 OVERDOSAGE

### 11 DESCRIPTION

## **12 CLINICAL PHARMACOLOGY**

- 12.1 Mechanism of Action
- 12.2 Pharmacodynamics
- 12.3 Pharmacokinetics

## **13 NONCLINICAL TOXICOLOGY**

- 13.1 Carcinogenesis, Mutagenesis, Impairment Of Fertility

## **14 CLINICAL STUDIES**

## **16 HOW SUPPLIED/STORAGE AND HANDLING**

## **17 PATIENT COUNSELING INFORMATION**

\* Sections or subsections omitted from the full prescribing information are not listed.

---

## **FULL PRESCRIBING INFORMATION**

### **1 INDICATIONS AND USAGE**

Simvastatin tablets are indicated:

- To reduce the risk of total mortality by reducing risk of coronary heart disease death, non-fatal myocardial infarction and stroke, and the need for coronary and non-coronary revascularization procedures in adults with established coronary heart disease, cerebrovascular disease, peripheral vascular disease, and/or diabetes, who are at high risk of coronary heart disease events.
- As an adjunct to diet to reduce low-density lipoprotein cholesterol (LDL-C):
  - o In adults with primary hyperlipidemia.
  - o In adults and pediatric patients aged 10 years and older with heterozygous familial hypercholesterolemia (HeFH).
- As an adjunct to other LDL-C-lowering therapies to reduce LDL-C in adults with homozygous familial hypercholesterolemia (HoFH).
- As an adjunct to diet for the treatment of adults with:
  - o Primary dysbetalipoproteinemia.
  - o Hypertriglyceridemia.

### **2 DOSAGE AND ADMINISTRATION**

#### **2.1 Important Dosage and Administration Information**

- Take simvastatin tablets orally once daily in the evening.
- The maximum recommended dosage is simvastatin tablets 40 mg once daily [see *Dosage and Administration* ( 2.2, 2.3)]. The simvastatin tablets 80 mg daily dosage is restricted to patients who have been taking simvastatin 80 mg daily chronically (e.g., for 12 months or more) without evidence of muscle toxicity [see *Warnings and Precautions* ( 5.1)].
- For patients that require a high-intensity statin or are unable to achieve their LDL-C goal receiving simvastatin tablets 40 mg daily, prescribe alternative LDL-C-lowering treatment.
- Assess LDL-C when clinically appropriate, as early as 4 weeks after initiating simvastatin tablets, and adjust the dosage if necessary.

#### **2.2 Recommended Dosage in Adult Patients**

The recommended dosage range of simvastatin tablets are 20 mg to 40 mg once daily.

## 2.3 Recommended Dosage in Pediatric Patients 10 Years of Age and Older with HeFH

The recommended dosage range of simvastatin tablets are 10 mg to 40 mg daily.

## 2.4 Recommended Dosage in Patients with Renal Impairment

For patients with severe renal impairment [creatinine clearance (CL<sub>cr</sub>) 15 to 29 mL/min], the recommended starting dosage of simvastatin is 5 mg once daily [see *Warnings and Precautions ( 5.1) and Use in Specific Populations ( 8.6)*]. Simvastatin tablets are not available in a 5 mg strength. Use another simvastatin product to initiate dosing in such patients.

There are no dosage adjustment recommendations for patients with mild or moderate renal impairment.

## 2.5 Dosage Modifications Due to Drug Interactions

Concomitant use of simvastatin tablets with the following drugs requires dosage modification of simvastatin tablets [see *Warnings and Precautions ( 5.1) and Drug Interactions ( 7.1)*].

### Patients taking Lomitapide

Reduce the dosage of simvastatin tablets by 50%. Do not exceed simvastatin tablets 20 mg once daily (or 40 mg once daily for patients who have previously taken simvastatin tablets 80 mg daily chronically while taking lomitapide) [see *Dosage and Administration ( 2.1)*].

### Patients taking Verapamil, Diltiazem, or Dronedarone

Do not exceed simvastatin tablets 10 mg once daily.

### Patients taking Amiodarone, Amlodipine, or Ranolazine

Do not exceed simvastatin tablets 20 mg once daily.

## 3 DOSAGE FORMS AND STRENGTHS

- Simvastatin tablets USP, 5 mg are yellow colored, oval shaped, film coated tablet, debossed with 'H' on one side and '16' on other side.
- Simvastatin tablets USP, 10 mg are pink colored, oval shaped, film coated tablet, debossed with 'H' on one side and '17' on other side.
- Simvastatin tablets USP, 20 mg are brown colored, oval shaped, film coated tablet, debossed with 'H' on one side and '18' on other side.
- Simvastatin tablets USP, 40 mg are brick red colored, oval shaped, film coated tablet, debossed with 'H' on one side and '19' on other side.
- Simvastatin tablets USP, 80 mg are brick red capsule shaped, film coated tablet, debossed with 'H' on one side and '20' on other side.

## 4 CONTRAINDICATIONS

Simvastatin tablets are contraindicated in the following conditions:

- Concomitant use of strong CYP3A4 inhibitors (select azole anti-fungals, macrolide antibiotics, anti-viral medications, and nefazodone) [see *Drug Interactions ( 7.1)*].
- Concomitant use of cyclosporine, danazol or gemfibrozil [see *Drug Interactions ( 7.1)*].
- Acute liver failure or decompensated cirrhosis [see *Warnings and Precautions ( 5.3)*].
- Hypersensitivity to simvastatin or any excipients in simvastatin tablets. Hypersensitivity reactions, including anaphylaxis, angioedema and Stevens-Johnson syndrome, have

been reported [see *Adverse Reactions* ( 6.2)].

## 5 WARNINGS AND PRECAUTIONS

### 5.1 Myopathy and Rhabdomyolysis

Simvastatin may cause myopathy and rhabdomyolysis. Acute kidney injury secondary to myoglobinuria and rare fatalities have occurred as a result of rhabdomyolysis in patients treated with statins, including simvastatin.

In clinical studies of 24,747 simvastatin -treated patients with a median follow-up of 4 years, the incidence of myopathy, defined as unexplained muscle weakness, pain, or tenderness accompanied by creatinine kinase (CK) increases greater than ten times the upper limit of normal (10xULN), were approximately 0.03%, 0.08%, and 0.61% in patients treated with simvastatin 20 mg, 40 mg, and 80 mg daily, respectively. In another clinical study of 12,064 simvastatin-treated patients (with a history of myocardial infarction) with a mean follow-up of 6.7 years, the incidences of myopathy in patients taking simvastatin 20 mg and 80 mg daily were approximately 0.02% and 0.9%, respectively. The incidences of rhabdomyolysis (defined as myopathy with a CK >40xULN) in patients taking simvastatin 20 mg and 80 mg daily were approximately 0% and 0.4%, respectively [see *Adverse Reactions* ( 6.1)].

#### Risk Factors for Myopathy

Risk factors for myopathy include age 65 years or greater, uncontrolled hypothyroidism, renal impairment, concomitant use with certain other drugs (including other lipid-lowering therapies), and higher simvastatin dosage; Chinese patients on simvastatin may be at higher risk for myopathy [see *Contraindications* ( 4), *Drug Interactions* ( 7.1), and *Use in Specific Populations* ( 8.8)]. The risk of myopathy is increased by elevated plasma levels of simvastatin and simvastatin acid. The risk is also greater in patients taking simvastatin 80 mg daily compared with patients taking lower simvastatin dosages and compared with patients using other statins with similar or greater LDL-C-lowering efficacy [see *Adverse Reactions* ( 6.1)].

#### Steps to Prevent or Reduce the Risk of Myopathy and Rhabdomyolysis

The concomitant use of strong CYP3A4 inhibitors with simvastatin is contraindicated. If short-term treatment with strong CYP3A4 inhibitors is required, temporarily suspend simvastatin during the duration of strong CYP3A4 inhibitor treatment. The concomitant use of simvastatin with gemfibrozil, cyclosporine, or danazol is also contraindicated [see *Contraindications* (4) and *Drug Interactions* ( 7.1)] .

Simvastatin dosage modifications are recommended for patients taking lomitapide, verapamil, diltiazem, dronedarone, amiodarone, amlodipine or ranolazine [see *Dosage and Administration* ( 2.5)] . Simvastatin use should be temporarily suspended in patients taking daptomycin. Lipid modifying doses (>1 gram/day) of niacin, fibrates, colchicine, and grapefruit juice may also increase the risk of myopathy and rhabdomyolysis [see *Drug Interactions* ( 7.1)].

Use the 80 mg daily dosage of simvastatin only in patients who have been taking simvastatin 80 mg daily chronically without evidence of muscle toxicity [see *Dosage and Administration* ( 2.1)] . If patients treated with simvastatin 80 mg are prescribed an interacting drug that increases the risk for myopathy and rhabdomyolysis, switch to an alternate statin [see *Drug Interactions* ( 7.1)] .

Discontinue simvastatin if markedly elevated CK levels occur or if myopathy is either diagnosed or suspected. Muscle symptoms and CK increases may resolve if simvastatin is discontinued. Temporarily discontinue simvastatin in patients experiencing an acute or serious condition at high risk of developing renal failure secondary to rhabdomyolysis, e.g., sepsis; shock; severe hypovolemia; major surgery; trauma; severe metabolic, endocrine, or electrolyte disorders; or uncontrolled epilepsy.

Inform patients of the risk of myopathy and rhabdomyolysis when starting or increasing the simvastatin dosage and advise patients receiving simvastatin 80 mg of the increased risk of myopathy and rhabdomyolysis. Instruct patients to promptly report any unexplained muscle pain, tenderness or weakness, particularly if accompanied by malaise or fever.

## 5.2 Immune-Mediated Necrotizing Myopathy

There have been rare reports of immune-mediated necrotizing myopathy (IMNM), an autoimmune myopathy, associated with statin use, including simvastatin. IMNM is characterized by proximal muscle weakness and elevated serum creatine kinase that persist despite discontinuation of statin treatment; positive anti-HMG CoA reductase antibody; muscle biopsy showing necrotizing myopathy without significant inflammation; and improvement with immunosuppressive agents. Additional neuromuscular and serologic testing may be necessary. Treatment with immunosuppressive agents may be required. Discontinue simvastatin if IMNM is suspected.

## 5.3 Hepatic Dysfunction

Increases in serum transaminases have been reported with use of simvastatin [see *Adverse Reactions ( 6.1)*]. In most cases, these changes appeared soon after initiation, were transient, were not accompanied by symptoms, and resolved or improved on continued therapy or after a brief interruption in therapy. Persistent increases to more than 3xULN in serum transaminases have occurred in approximately 1% of patients receiving simvastatin in clinical studies. Marked persistent increases of hepatic transaminases have also occurred with simvastatin . There have been rare postmarketing reports of fatal and non-fatal hepatic failure in patients taking statins, including simvastatin.

Patients who consume substantial quantities of alcohol and/or have a history of liver disease may be at increased risk for hepatic injury.

Consider liver enzyme testing before simvastatin initiation and when clinically indicated thereafter. Simvastatin is contraindicated in patients with acute liver failure or decompensated cirrhosis [see *Contraindications ( 4)*]. If serious hepatic injury with clinical symptoms and/or hyperbilirubinemia or jaundice occurs, promptly discontinue simvastatin.

## 5.4 Increases in HbA1C and Fasting Serum Glucose Levels

Increases in HbA1c and fasting serum glucose levels have been reported with statins, including simvastatin. Optimize lifestyle measures, including regular exercise, maintaining a healthy body weight, and making healthy food choices.

## 6 ADVERSE REACTIONS

The following important adverse reactions are described below and elsewhere in the labeling:

- Myopathy and Rhabdomyolysis [see *Warnings and Precautions ( 5.1)*]
- Immune-Mediated Necrotizing Myopathy [see *Warnings and Precautions ( 5.2)*]
- Hepatic Dysfunction [see *Warnings and Precautions ( 5.3)*]
- Increases in HbA1c and Fasting Serum Glucose Levels [see *Warnings and Precautions ( 5.4)*]

### 6.1 Clinical Trials Experience

Because clinical studies are conducted under widely varying conditions, adverse reaction rates observed in the clinical studies of a drug cannot be directly compared to rates in the clinical studies of another drug and may not reflect the rates observed in practice. In clinical studies, 2,423 adult patients were exposed to simvastatin with a median duration of follow-up of approximately 18 months. The most commonly reported

adverse reactions (incidence  $\geq 5\%$ ) in these simvastatin clinical studies were: upper respiratory infections (9%), headache (7%), abdominal pain (7%), constipation (7%), and nausea (5%). Overall, 1.4% of patients discontinued simvastatin due to adverse reactions. The most common adverse reactions that led to discontinuation were: gastrointestinal disorders (0.5%), myalgia (0.1%), and arthralgia (0.1%).

In a Cardiovascular Outcomes Study (the Scandinavian Simvastatin Survival Study [Study 4S]), adult patients (age range 35 to 71 years, 19% women, 100% Caucasians) were treated with 20 to 40 mg per day of simvastatin or placebo over a median of 5.4 years [see *Clinical Studies* ( 14) ] ; adverse reactions reported in  $\geq 2\%$  of patients and at a rate greater than placebo are shown in Table 1.

**Table 1: Adverse Reactions Reported  $\geq 2\%$  of Patients Treated with simvastatin and Greater than Placebo in Study 4S**

	<b>% Placebo (N = 2,223)</b>	<b>% simvastatin (N = 2,221)</b>
Bronchitis	6.3	6.6
Abdominal pain	5.8	5.9
Atrial fibrillation	5.1	5.7
Gastritis	3.9	4.9
Eczema	3.0	4.5
Vertigo	4.2	4.5
Diabetes mellitus	3.6	4.2
Insomnia	3.8	4.0
Myalgia	3.2	3.7
Urinary tract infection	3.1	3.2
Edema/swelling	2.3	2.7
Headache	2.1	2.5
Sinusitis	1.8	2.3
Constipation	1.6	2.2

#### Myopathy/Rhabdomyolysis

In clinical studies with a median follow-up of at least 4 years, in which 24,747 patients received simvastatin, the incidence of myopathy (defined as unexplained muscle weakness, pain, or tenderness accompanied by CK increases greater than 10xULN) was approximately 0.03%, 0.08%, and 0.61% for the simvastatin 20 mg, 40 mg, and 80 mg daily groups, respectively.

In a clinical outcomes study in which 12,064 adult patients with a history of myocardial infarction were treated with simvastatin (mean follow-up 6.7 years), the incidence of myopathy (defined as unexplained muscle weakness or pain with a serum CK  $>10\times$  [1200 U/L] ULN) in patients taking simvastatin 20 mg and 80 mg daily was approximately 0.02% and 0.9%, respectively. The incidence of rhabdomyolysis (defined as myopathy with a CK  $>40\times$ ULN) in patients on simvastatin 20 mg and 80 mg daily was

approximately 0% and 0.4%, respectively. The incidence of myopathy and rhabdomyolysis were highest during the first year and then decreased during the subsequent years of treatment.

In another clinical outcomes study in which 10,269 adult patients were treated with simvastatin 40 mg per day (mean follow-up of 5 years), the incidence of myopathy/rhabdomyolysis was <0.1% in patients treated with simvastatin.

#### Elevations in Liver Enzyme Tests

Moderate (less than 3xULN) elevations of serum transaminases have been reported with use of simvastatin.

Persistent increases to more than 3xULN in serum transaminases have occurred in approximately 1% of patients receiving simvastatin in clinical studies. Marked persistent increases of hepatic transaminases have occurred with simvastatin. Elevated alkaline phosphatase and  $\gamma$ -glutamyl transpeptidase have also been reported.

In Study 4S, with a median follow-up of 5.4 years, 1,986 adult patients were treated with simvastatin 20 mg once daily, of whom 37% titrated to 40 mg once daily. The percentage of patients with one or more occurrences of transaminase elevations to > 3xULN was 0.7% in patients taking simvastatin compared with 0.6% in patients taking placebo. Elevated transaminases leading to discontinuation of study treatment occurred in 0.4% of patients taking simvastatin and 0.2% of patients taking placebo. The majority of elevated transaminases leading to treatment discontinuation occurred within in the first year.

#### Adverse Reactions in Pediatric Patients with Heterozygous Familial Hypercholesterolemia

In a 48-week clinical study in pediatric patients 10 years of age and older (43% female, 97.7% Caucasians, 1.7% Hispanics, 0.6% Multiracial) with HeFH (n=175), treated with placebo or simvastatin (10 to 40 mg daily), the most common adverse reactions were upper respiratory infection, headache, abdominal pain, and nausea [see *Use in Specific Populations* ( 8.4) and *Clinical Studies* ( 14)].

## **6.2 Postmarketing Experience**

The following adverse reactions have been identified during post-approval use of simvastatin. Because these reactions are reported voluntarily from a population of uncertain size, it is not always possible to reliably estimate their frequency or establish a causal relationship to drug exposure.

*Body as whole:* fever, chills, malaise, asthenia

*Blood and Lymphatic System Disorders:* anemia, thrombocytopenia, leukopenia, hemolytic anemia, positive ANA, ESR increase, eosinophilia

*Gastrointestinal Disorders:* pancreatitis, vomiting

*Hepatic and Pancreatic Disorders:* hepatitis/jaundice, fatal and non-fatal hepatic failure

*Immune System Disorders:* hypersensitivity syndrome including: anaphylaxis, angioedema, lupus erythematosus-like syndrome, dermatomyositis, vasculitis

*Musculoskeletal and Connective Tissue Disorders:* muscle cramps, immune-mediated necrotizing myopathy, polymyalgia rheumatica, arthritis

*Nervous System Disorders:* dizziness, depression, paresthesia, peripheral neuropathy, Rare reports of cognitive impairment (e.g., memory loss, forgetfulness, amnesia, memory impairment, confusion) associated with statin use. Cognitive impairment was generally nonserious, and reversible upon statin discontinuation, with variable times to symptom onset (1 day to years) and symptom resolution (median of 3 weeks).

*Skin and Subcutaneous Tissue Disorders:* pruritus, alopecia, a variety of skin changes (e.g., nodules, discoloration, dryness of skin/mucous membranes, changes to hair/nails), purpura, urticaria, photosensitivity, flushing, toxic epidermal necrolysis, erythema multiforme, including Stevens-Johnson syndrome

*Respiratory and Thoracic:* interstitial lung disease, dyspnea

*Reproductive System Disorders:* erectile dysfunction



## 7 DRUG INTERACTIONS

### 7.1 Drug Interactions that Increase the Risk of Myopathy and Rhabdomyolysis with simvastatin

Simvastatin is a substrate of CYP3A4 and of the transport protein OATP1B1. Simvastatin exposure can be significantly increased with concomitant administration of inhibitors of CYP3A4 and OATP1B1. Table 2 includes a list of drugs that increase the risk of myopathy and rhabdomyolysis when used concomitantly with simvastatin and instructions for preventing or managing them [see *Warnings and Precautions ( 5.1) and Clinical Pharmacology ( 12.3)*].

**Table 2: Drug Interactions that Increase the Risk of Myopathy and Rhabdomyolysis with Simvastatin**

<b>Strong CYP3A4 inhibitors</b>	
<i>Clinical Impact:</i>	Simvastatin is a substrate of CYP3A4. Concomitant use of strong CYP3A4 inhibitors with simvastatin increases simvastatin exposure and increases the risk of myopathy and rhabdomyolysis, particularly with higher simvastatin dosages.
<i>Intervention:</i>	Concomitant use of strong CYP3A4 inhibitors with simvastatin is contraindicated [see <i>Contraindications ( 4)</i> ]. If treatment with a CYP3A4 inhibitor is unavoidable, suspend simvastatin during the course of strong CYP3A4 inhibitor treatment.
<i>Examples:</i>	Select azole anti-fungals (e.g., itraconazole, ketoconazole, posaconazole, and voriconazole), select macrolide antibiotics (e.g., erythromycin and clarithromycin), select HIV protease inhibitors (e.g., nelfinavir, ritonavir, and darunavir/ritonavir), select HCV protease inhibitors (e.g., boceprevir and telaprevir), cobicistat-containing products, and nefazodone.
<b>Cyclosporine, Danazol, or Gemfibrozil</b>	
<i>Clinical Impact:</i>	The risk of myopathy and rhabdomyolysis is increased with concomitant use of cyclosporine, danazol, or gemfibrozil with simvastatin. Gemfibrozil may cause myopathy when given alone.
<i>Intervention:</i>	Concomitant use of cyclosporine, danazol, or gemfibrozil with simvastatin is contraindicated [see <i>Contraindications ( 4)</i> ].
<b>Amiodarone, Dronedaron, Ranolazine, or Calcium Channel Blockers</b>	
<i>Clinical Impact:</i>	The risk of myopathy and rhabdomyolysis is increased by concomitant use of amiodarone, dronedaron, ranolazine, or calcium channel blockers with simvastatin.
<i>Intervention:</i>	For patients taking verapamil, diltiazem, or dronedaron, do not exceed simvastatin 10 mg daily . For patients taking amiodarone, amlodipine, or ranolazine, do not exceed simvastatin 20 mg daily [see <i>Dosage and Administration ( 2.5)</i> ].
<b>Lomitapide</b>	
<i>Clinical Impact:</i>	Simvastatin exposure is approximately doubled with concomitant use of lomitapide and the risk of myopathy and rhabdomyolysis is increased .
<i>Intervention:</i>	Reduce the dose of simvastatin by 50% if initiating lomitapide. Do not exceed simvastatin 20 mg daily (or simvastatin 40 mg daily for patients who have previously taken simvastatin 80 mg daily chronically) while taking lomitapide [see <i>Dosage and Administration ( 2.5)</i> ].

Administration ( 2.1, 2.5)].

### **Daptomycin**

*Clinical Impact:*

Cases of rhabdomyolysis have been reported with simvastatin administered with daptomycin. Both simvastatin and daptomycin can cause myopathy and rhabdomyolysis when given alone and the risk of myopathy and rhabdomyolysis may be increased by coadministration.

*Intervention:*

If treatment with daptomycin is required, consider temporarily suspending simvastatin during the course of daptomycin treatment.

### **Niacin**

*Clinical Impact:*

Cases of myopathy and rhabdomyolysis have been observed with concomitant use of lipid modifying dosages of niacin-containing products ( $\geq 1$  gram/day niacin) with simvastatin. The risk of myopathy is greater in Chinese patients. In a clinical study (median follow-up 3.9 years) of patients at high risk of CVD and with well-controlled LDL-C levels on simvastatin 40 mg/day with or without ezetimibe 10 mg/day, there was no incremental benefit on cardiovascular outcomes with the addition of lipid-modifying doses of niacin

*Intervention:*

Concomitant use of simvastatin with lipid-modifying dosages of niacin is not recommended in Chinese patients [see *Use in Specific Populations ( 8.8)*]. For non-Chinese patients, consider if the benefit of using lipid-modifying doses of niacin concomitantly with simvastatin outweighs the increased risk of myopathy and rhabdomyolysis. If concomitant use is decided, monitor patients for signs and symptoms of myopathy, particularly during initiation of therapy and during upward dose titration of either drug.

### **Fibrates (other than Gemfibrozil)**

*Clinical Impact:*

Fibrates may cause myopathy when given alone. The risk of myopathy and rhabdomyolysis is increased with concomitant use of fibrates with simvastatin.

*Intervention:*

Consider if the benefit of using fibrates concomitantly with simvastatin outweighs the increased risk of myopathy and rhabdomyolysis. If concomitant use is decided, monitor patients for signs and symptoms of myopathy, particularly during initiation of therapy and during upward dose titration of either drug.

### **Colchicine**

*Clinical Impact:*

Cases of myopathy and rhabdomyolysis have been reported with concomitant use of colchicine with simvastatin

*Intervention:*

Consider if the benefit of using colchicine concomitantly with simvastatin outweighs the increased risk of myopathy and rhabdomyolysis. If concomitant use is decided, monitor patients for signs and symptoms of myopathy, particularly during initiation of therapy and during upward dose titration of either drug.

### **Grapefruit Juice**

*Clinical Impact:*

Grapefruit juice can raise the plasma levels of simvastatin and may increase the risk of myopathy and rhabdomyolysis.

*Intervention:*

Avoid grapefruit juice when taking simvastatin.

## **7.2 simvastatin Effects on Other Drugs**

Table 3 presents simvastatin’s effect on other drugs and instructions for preventing or managing them.

**Table 3: Simvastatin Effects on Other Drugs**

<b>Coumarin Anticoagulants</b>	
<i>Clinical Impact:</i>	Simvastatin may potentiate the effect of coumarin anticoagulants and increase the INR. The concomitant use of simvastatin (20 to 40 mg) and coumarin anticoagulants increased the INR from a baseline of 1.7 to 1.8 in healthy subjects and from 2.6 to 3.4 in patients with hyperlipidemia. There are postmarketing reports of clinically evident bleeding and/or increased INR in patients taking concomitant statins and warfarin.
<i>Intervention:</i>	In patients taking coumarin anticoagulants, obtain an INR before starting simvastatin and frequently enough after initiation, dose titration, or discontinuation to ensure that no significant alteration in INR occurs. Once the INR is stable, monitor INR at regularly recommended intervals.
<b>Digoxin</b>	
<i>Clinical Impact:</i>	Concomitant use of digoxin with simvastatin may result in elevated plasma digoxin concentrations [see <i>Clinical Pharmacology</i> ( 12.3)] .
<i>Intervention:</i>	Monitor digoxin levels in patients taking digoxin when simvastatin is initiated.

## 8 USE IN SPECIFIC POPULATIONS

### 8.1 Pregnancy

#### Risk Summary

Discontinue simvastatin when pregnancy is recognized. Alternatively, consider the ongoing therapeutic needs of the individual patient.

Simvastatin decreases synthesis of cholesterol and possibly other biologically active substances derived from cholesterol; therefore, simvastatin may cause fetal harm when administered to pregnant patients based on the mechanism of action [see *Clinical Pharmacology* ( 12.1)] . In addition, treatment of hyperlipidemia is not generally necessary during pregnancy. Atherosclerosis is a chronic process and the discontinuation of lipid-lowering drugs during pregnancy should have little impact on the outcome of long-term therapy of primary hyperlipidemia for most patients.

Available data from case series and prospective and retrospective observational cohort studies over decades of use with statins in pregnant women have not identified a drug-associated risk of major congenital malformations. Published data from prospective and retrospective observational cohort studies with simvastatin use in pregnant women are insufficient to determine if there is a drug-associated risk of miscarriage (see *Data*).

In animal reproduction studies, no adverse developmental effects were observed in pregnant rats or rabbits orally administered simvastatin during the period of organogenesis at doses that resulted in 2.5 and 2 times, respectively, the human exposure at the maximum recommended human dosage of 80 mg/day, based on body surface area (mg/m<sup>2</sup>) (see *Data*).

The estimated background risk of major birth defects and miscarriage for the indicated population is unknown. In the U.S. general population, the estimated background risk of major birth defects and miscarriage in clinically recognized pregnancies is 2 to 4% and

15 to 20%, respectively.

## Data

### *Human Data*

A Medicaid cohort linkage study of 1152 statin-exposed pregnant women compared to 886,996 controls did not find a significant teratogenic effect from maternal use of statins in the first trimester of pregnancy, after adjusting for potential confounders – including maternal age, diabetes mellitus, hypertension, obesity, and alcohol and tobacco use – using propensity score-based methods. The relative risk of congenital malformations between the group with statin use and the group with no statin use in the first trimester was 1.07 (95% confidence interval 0.85 to 1.37) after controlling for confounders, particularly pre-existing diabetes mellitus. There were also no statistically significant increases in any of the organ-specific malformations assessed after accounting for confounders. In the majority of pregnancies, statin treatment was initiated prior to pregnancy and was discontinued at some point in the first trimester when pregnancy was identified. Study limitations include reliance on physician coding to define the presence of a malformation, lack of control for certain confounders such as body mass index, use of prescription dispensing as verification for the use of a statin, and lack of information on non-live births.

### *Animal Data*

Simvastatin was given to pregnant rats at doses of 6.25, 12.5 and 25 mg/kg/day (0.6 times, 1.3 times, and 2.5 times, respectively, the maximum recommended dosage of 80 mg/day when normalized to body surface area) from gestation days 6 to 17 and to pregnant rabbits from gestation days 6 to 18 at doses of 2.5, 5, and 10 mg/kg/day (0.5 times, 1 times, and 2 times, respectively, the maximum recommended dosage of 80 mg/day when normalized to body surface area). For both species, there was no evidence of maternal toxicity or embryoletality. In rats, mean fetal body weights in the 25 mg/kg/day group were decreased 5.4%. Similar fetal body weight effects were not observed in rabbits.

Simvastatin doses of 6.25, 12.5 and 25 mg/kg/day (0.6 times, 1.3 times, and 2.5 times, respectively, the maximum recommended dosage of 80 mg/day when normalized to body surface area) were given to pregnant rats from gestation day 15 to lactation day 21. Slight decreases in maternal body weight gain and pup postnatal day 0 weight were observed in the 25 mg/kg/day dose group. Mean body weight gain of pups during lactation was slightly decreased at doses  $\geq$ 12.5 mg/kg/day. Post weaning weight, behavior, reproductive performance and fertility of the offspring were not affected at any dose tested.

Placental transfer of simvastatin was not evaluated in rats or rabbits. However, it has been shown that other drugs in this class cross the placenta.

## **8.2 Lactation**

### Risk Summary

There is no information about the presence of simvastatin in human or animal milk, the effects of the drug on the breastfed infant or the effects of the drug on milk production. However, it has been shown that another drug in this class passes into human milk. Statins, including simvastatin, decrease cholesterol synthesis and possibly the synthesis of other biologically active substances derived from cholesterol and may cause harm to the breastfed infant.

Because of the potential for serious adverse reactions in a breastfed infant, based on the mechanism of action, advise patients that breastfeeding is not recommended during treatment with simvastatin [see *Use in Specific Populations ( 8.1)*, *Clinical Pharmacology ( 12.1)*].

## **8.4 Pediatric Use**

The safety and effectiveness of simvastatin as an adjunct to diet to reduce LDL-C have been established in pediatric patients 10 years of age and older with HeFH. Use of simvastatin for this indication is based on a double-blind, placebo-controlled clinical study

in 175 pediatric patients (99 boys and 76 girls at least 1 year post-menarche) 10 years of age and older with HeFH. In this limited controlled study, there was no significant effect on growth or sexual maturation in the boys or girls, or on menstrual cycle length in girls.

The safety and effectiveness of simvastatin have not been established in pediatric patients younger than 10 years of age with HeFH or in pediatric patients with other types of hyperlipidemia (other than HeFH).

## 8.5 Geriatric Use

Of the total number of simvastatin-treated patients in clinical studies 1,021 (23%) patients, 5,366 (52%) patients, and 363 (15%) patients were  $\geq 65$  years old, respectively. In Study HPS, 615 (6%) patients were  $\geq 75$  years old [see *Clinical Studies ( 14)*]. In a clinical study of patients treated with simvastatin 80 mg daily, patients  $\geq 65$  years of age had an increased risk of myopathy, including rhabdomyolysis, compared to patients  $< 65$  years of age.

A pharmacokinetic study with simvastatin use showed the mean plasma level of total inhibitors to be approximately 45% higher in geriatric patients between 70 to 78 years of age compared with patients between 18 to 30 years of age [see *Clinical Pharmacology ( 12.3)*].

Advanced age ( $\geq 65$  years) is a risk factor for simvastatin-associated myopathy and rhabdomyolysis. Dose selection for an elderly patient should be cautious, recognizing the greater frequency of decreased hepatic, renal, or cardiac function, and of concomitant disease or other drug therapy and the higher risk of myopathy. Monitor geriatric patients receiving simvastatin for the increased risk of myopathy [see *Warnings and Precautions ( 5.1)*].

## 8.6 Renal Impairment

Renal impairment is a risk factor for myopathy and rhabdomyolysis. Monitor all patients with renal impairment for development of myopathy. In patients with severe renal impairment ( $CL_{cr}$  15 to 29 mL/min), the recommended starting dosage is simvastatin 5 mg once daily [see *Dosage and Administration ( 2.4)*, *Warnings and Precautions ( 5.1)*]. Simvastatin is not available in a 5 mg strength. Use another simvastatin product to initiate dosing in such patients.

## 8.7 Hepatic Impairment

Simvastatin is contraindicated in patients with acute liver failure or decompensated cirrhosis [see *Contraindications ( 4)*, *Warnings and Precautions ( 5.3)*].

## 8.8 Chinese Patients

In a clinical study in which patients at high risk of CVD were treated with simvastatin 40 mg/day (median follow-up 3.9 years), the incidence of myopathy was approximately 0.05% for non-Chinese patients (n=7367) compared with 0.24% for Chinese patients (n=5468). In this study, the incidence of myopathy for Chinese patients on simvastatin 40 mg/day or ezetimibe/ simvastatin 10/40 mg/day coadministered with extended-release niacin 2 g/day was 1.24%.

Chinese patients may be at higher risk for myopathy, monitor these patients appropriately. Coadministration of simvastatin with lipid-modifying doses of niacin-containing products ( $\geq 1$  g/day niacin) is not recommended in Chinese patients [see *Warnings and Precautions ( 5.1)*, *Drug Interactions ( 7.1)*].

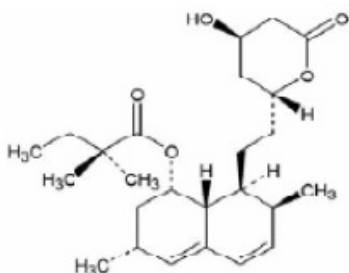
## 10 OVERDOSAGE

No specific antidotes for simvastatin are known. Contact Poison Control (1-800-222-1222) for latest recommendations.

## 11 DESCRIPTION

Simvastatin is a prodrug of 3-hydroxy-3-methylglutaryl coenzyme A (HMG-CoA) reductase inhibitor that is derived synthetically from a fermentation product of *Aspergillus terreus*.

Simvastatin is butanoic acid, 2,2-dimethyl-,1,2,3,7,8,8a-hexahydro-3,7-dimethyl-8-[2-(tetrahydro-4-hydroxy-6-oxo-2H-pyran-2-yl)-ethyl]-1-naphthalenyl ester, [1S-[1 $\alpha$ ,3 $\alpha$ ,7 $\beta$ ,8 $\beta$  (2S\*,4S\*),-8a]]]. The empirical formula of simvastatin is C<sub>25</sub>H<sub>38</sub>O<sub>5</sub> and its molecular weight is 418.57. Its structural formula is:



Simvastatin USP is a white to off-white crystalline powder that is practically insoluble in water, freely soluble in chloroform, methanol and alcohol, sparingly soluble in propylene glycol and very slightly soluble in hexane.

Simvastatin tablets, USP for oral use contain 5 mg, 10 mg, 20 mg, 40 mg or 80 mg of simvastatin and the following inactive ingredients: ascorbic acid, butylated hydroxyanisole, citric acid monohydrate, hydroxypropyl cellulose, hypromellose, iron oxide yellow, isopropyl alcohol, lactose monohydrate, magnesium stearate, microcrystalline cellulose, pregelatinized starch, talc and titanium dioxide. Additionally the 10 mg, 20 mg, 40 mg and 80 mg strengths contain: iron oxide red. The botanical source for pregelatinized starch is corn starch.

## 12 CLINICAL PHARMACOLOGY

### 12.1 Mechanism of Action

Simvastatin is a prodrug and is hydrolyzed to its active  $\beta$ -hydroxyacid form, simvastatin acid, after administration. Simvastatin acid and its metabolites are inhibitors of HMG-CoA reductase, the rate-limiting enzyme that converts HMG-CoA to mevalonate, a precursor of cholesterol.

### 12.2 Pharmacodynamics

Inhibition of HMG-CoA reductase by simvastatin acid accelerates the expression of LDL-receptors, followed by the uptake of LDL-C from blood to the liver, leading to a decrease in plasma LDL-C and total cholesterol. Sustained inhibition of cholesterol synthesis in the

liver also decreases levels of very-low-density lipoproteins. The maximum LDL-C reduction of simvastatin is usually achieved by 4 weeks and is maintained after that.

### **12.3 Pharmacokinetics**

Simvastatin is a lactone that is readily hydrolyzed *in vivo* to the corresponding  $\beta$ -hydroxyacid. Pharmacokinetics (PK) of simvastatin and its metabolites was originally characterized using inhibition of HMG-CoA reductase activity following base hydrolysis of plasma samples, as specific bioanalytical methods were not available. Inhibition of the enzyme activity (equivalent to the level of total inhibitors) represented the combination of activities in plasma following administration of simvastatin from both active (simvastatin acid and its metabolites) and latent forms (simvastatin and its metabolites) after conversion to the active forms in the presence of base.

#### Absorption

Following an oral dose of  $^{14}\text{C}$ -labeled simvastatin, plasma concentrations of total radioactivity (simvastatin plus  $^{14}\text{C}$ -metabolites) peaked at 4 hours and declined rapidly to about 10% of peak by 12 hours postdose. Since simvastatin undergoes extensive first-pass extraction in the liver, the availability of simvastatin to the general circulation is low (<5%). PK, assessed as area under the concentrations of total inhibitors - time curve, was apparently linear with doses up to 120 mg.

#### *Effect of Food*

The plasma profile of total inhibitors concentration was not affected when simvastatin was administered with low fat meal.

#### Distribution

Both simvastatin and its  $\beta$ -hydroxyacid metabolite are highly bound (approximately 95%) to human plasma proteins.

#### Elimination

##### *Metabolism*

Simvastatin is metabolized by CYP3A4. The major active metabolites of simvastatin present in human plasma are simvastatin acid and its 6'-hydroxy, 6'-hydroxymethyl, and 6'-exomethylene derivatives. Peak plasma concentrations of both active and total inhibitors were attained within 1.3 to 2.4 hours postdose.

##### *Excretion*

Following an oral dose of  $^{14}\text{C}$ -labeled simvastatin, 13% of the dose was excreted in urine and 60% in feces.

#### Specific Populations

##### *Geriatric Patients*

In a study including 16 geriatric patients between 70 and 78 years of age who received simvastatin 40 mg/day, the mean plasma level of total inhibitors was increased approximately 45% compared with 18 patients between 18 to 30 years of age [see *Use in Specific Populations ( 8.5)*].

#### Drug Interaction Studies

Simvastatin acid is a substrate of the transport protein OATP1B1. Concomitant administration of inhibitors of the transport protein OATP1B1 and/or CYP3A4 may lead to increased exposure of simvastatin acid. Cyclosporine has been shown to increase the

AUC of statins; although the mechanism is not fully understood, the increase in AUC for simvastatin acid is presumably due, in part, to inhibition of CYP3A4 and/or OATP1B1 [see *Drug Interactions ( 7)*].

Table 4 displays the effect of coadministered drugs or grapefruit juice on simvastatin systemic exposure [see *Drug Interactions ( 7)*].

**Table 4: Effect of Coadministered Drugs or Grapefruit Juice on simvastatin Systemic Exposure**

Coadministered Drug or Grapefruit Juice	Dosing of Coadministered Drug or Grapefruit Juice	Dosing of Simvastatin	Geometric Mean Ratio (Ratio* with / without coadministered drug) No Effect = 1.00		
				AUC	C <sub>max</sub>
Telithromycin †	200 mg QD for 4 days	80 mg	simvastatin acid ‡	12	15
			simvastatin	8.9	5.3
Nelfinavir †	1250 mg BID for 14 days	20 mg QD for 28 days	simvastatin acid ‡	6	6.2
			simvastatin		
Itraconazole †	200 mg QD for 4 days	80 mg	simvastatin acid ‡		13.1
			simvastatin		13.1
Posaconazole	100 mg (oral suspension) QD for 13 days 200 mg (oral suspension) QD for 13 days	40 mg	simvastatin acid	7.3	9.2
			simvastatin	10.3	9.4
		40 mg	simvastatin acid	8.5	9.5
			simvastatin	10.6	11.4
Gemfibrozil	600 mg BID for 3 days	40 mg	simvastatin acid	2.85	2.18
			simvastatin	1.35	0.91
Grapefruit Juice § (high dose)	200 mL of double-strength TID ¶	60 mg single dose	simvastatin acid	7	
			simvastatin	16	
Grapefruit Juice § (low dose)	8 oz (about 237 mL) of single-strength #	20 mg single dose	simvastatin acid	1.3	
			simvastatin	1.9	
Verapamil SR	240 mg QD days 1-7 then 240 mg BID on Days 8-10	80 mg on Day 10	simvastatin acid	2.3	2.4
			simvastatin	2.5	2.1
Diltiazem	120 mg BID for 10 days	80 mg on Day 10	simvastatin acid	2.69	2.69
			simvastatin	3.10	2.88
Diltiazem	120 mg BID for 14 days	20 mg on Day 14	simvastatin	4.6	3.6
Dronedarone	400 mg BID for 14 days	40 mg QD for 14 days	simvastatin acid	1.96	2.14
			simvastatin	3.90	3.75
Amiodarone	400 mg QD for 3 days	40 mg on Day 3	simvastatin acid	1.75	1.72
			simvastatin	1.76	1.79
Amlodipine	10 mg QD x 10 days	80 mg on Day 10	simvastatin acid	1.58	1.56
			simvastatin	1.77	1.47
Ranolazine SR	1000 mg BID for	80 mg on	simvastatin	2.26	2.28



	7 days	Day 1 and Days 6-9	acid simvastatin	1.86	1.75
Lomitapide	60 mg QD for 7 days	40 mg single dose	simvastatin acid	1.7	1.6
			simvastatin	2	2
Lomitapide	10 mg QD for 7 days	20 mg single dose	simvastatin acid	1.4	1.4
			simvastatin	1.6	1.7
Fenofibrate	160 mg QD X 14 days	80 mg QD on Days 8-14	simvastatin acid	0.64	0.89
			simvastatin	0.89	0.83
Niacin extended-release	2 g single dose	20 mg single dose	simvastatin acid	1.6	1.84
			simvastatin	1.4	1.08
Propranolol	80 mg single dose	80 mg single dose	total inhibitor active inhibitor	0.79 0.79	↓ from 33.6 to 21.1 ng·eq/ML  ↓ from 7.0 to 4.7 ng·eq/mL

\* Results based on a chemical assay except results with propranolol as indicated.

† Results could be representative of the following CYP3A4 inhibitors: ketoconazole, erythromycin, clarithromycin, HIV protease inhibitors, and nefazodone.

‡ Simvastatin acid refers to the  $\beta$ -hydroxyacid of simvastatin.

§ The effect of amounts of grapefruit juice between those used in these two studies on simvastatin pharmacokinetics has not been studied.

¶ Double-strength: one can of frozen concentrate diluted with one can of water. Grapefruit juice was administered TID for 2 days, and 200 mL together with single dose simvastatin, 30 and 90 minutes following single dose simvastatin on Day 3.

# Single-strength: one can of frozen concentrate diluted with 3 cans of water. Grapefruit juice was administered with breakfast for 3 days, and simvastatin was administered in the evening on Day 3.

#### *Simvastatin's Effect on the Pharmacokinetics of Other Drugs*

In a study of 12 healthy volunteers, simvastatin at the 80-mg dose had no effect on the metabolism of the probe cytochrome P450 isoform 3A4 (CYP3A4) substrates midazolam and erythromycin. Simvastatin is not an inhibitor of CYP3A4 and is not expected to affect the plasma levels of other drugs metabolized by CYP3A4.

Coadministration of simvastatin (40 mg QD for 10 days) resulted in an increase in the maximum mean levels of cardioactive digoxin (given as a single 0.4 mg dose on day 10) by approximately 0.3 ng/mL [see *Drug Interactions* ( 7.2) ].

## **13 NONCLINICAL TOXICOLOGY**

### **13.1 Carcinogenesis, Mutagenesis, Impairment Of Fertility**

In a 72-week carcinogenicity study, mice were administered daily doses of simvastatin

of 25, 100, and 400 mg/kg body weight, which resulted in mean plasma drug levels approximately 1, 4, and 8 times higher than the mean human plasma drug level, respectively (as total inhibitory activity based on AUC) after an 80-mg oral dose. Liver carcinomas were significantly increased in high-dose females and mid-and high-dose males with a maximum incidence of 90% in males. The incidence of adenomas of the liver was significantly increased in mid-and high-dose females. Drug treatment also significantly increased the incidence of lung adenomas in mid-and high-dose males and females. Adenomas of the Harderian gland (a gland of the eye of rodents) were significantly higher in high-dose mice than in controls. No evidence of a tumorigenic effect was observed at 25 mg/kg/day.

In a separate 92-week carcinogenicity study in mice at doses up to 25 mg/kg/day, no evidence of a tumorigenic effect was observed (mean plasma drug levels were 1 times higher than humans given 80 mg simvastatin as measured by AUC).

In a two-year study in rats at 25 mg/kg/day, there was a statistically significant increase in the incidence of thyroid follicular adenomas in female rats exposed to approximately 11 times higher levels of simvastatin than in humans given 80 mg simvastatin (as measured by AUC).

A second two-year rat carcinogenicity study with doses of 50 and 100 mg/kg/day produced hepatocellular adenomas and carcinomas (in female rats at both doses and in males at 100 mg/kg/day). Thyroid follicular cell adenomas were increased in males and females at both doses; thyroid follicular cell carcinomas were increased in females at 100 mg/kg/day. The increased incidence of thyroid neoplasms appears to be consistent with findings from other statins. These treatment levels represented plasma drug levels (AUC) of approximately 7 and 15 times (males) and 22 and 25 times (females) the mean human plasma drug exposure after an 80 milligram daily dose.

No evidence of mutagenicity was observed in a microbial mutagenicity (Ames) test with or without rat or mouse liver metabolic activation. In addition, no evidence of damage to genetic material was noted in an *in vitro* alkaline elution assay using rat hepatocytes, a V-79 mammalian cell forward mutation study, an *in vitro* chromosome aberration study in CHO cells, or an *in vivo* chromosomal aberration assay in mouse bone marrow.

There was decreased fertility in male rats treated with simvastatin for 34 weeks at 25 mg/kg body weight (4 times the maximum human exposure level, based on AUC, in patients receiving 80 mg/day); however, this effect was not observed during a subsequent fertility study in which simvastatin was administered at this same dose level to male rats for 11 weeks (the entire cycle of spermatogenesis including epididymal maturation). No microscopic changes were observed in the testes of rats from either study. At 180 mg/kg/day, (which produces exposure levels 22 times higher than those in humans taking 80 mg/day based on surface area, mg/m<sup>2</sup>), seminiferous tubule degeneration (necrosis and loss of spermatogenic epithelium) was observed. In dogs, there was drug-related testicular atrophy, decreased spermatogenesis, spermatocytic degeneration and giant cell formation at 10 mg/kg/day, (approximately 2 times the human exposure, based on AUC, at 80 mg/day). The clinical significance of these findings is unclear.

## 14 CLINICAL STUDIES

### Adults at High Risk of Coronary Heart Disease Events

In a randomized, double-blind, placebo-controlled, multi-centered study [the Scandinavian simvastatin Survival Study (Study 4S)], the effect of therapy with simvastatin on total mortality was assessed in 4,444 adult patients with CHD (history of angina and/or a previous myocardial infarction) and baseline total cholesterol (total-C) between 212 and 309 mg/dL who were on a lipid-lowering diet. In Study 4S, patients were treated with standard care, including lipid-lowering diet, and randomized to either simvastatin 20 to 40 mg/day (n=2,221) or placebo (n=2,223) for a median duration of 5.4 years.

- Simvastatin significantly reduced the risk of mortality by 30% (p=0.0003, 182 deaths in the simvastatin group vs 256 deaths in the placebo group). The risk of CHD mortality was significantly reduced by 42% (p=0.00001, 111 deaths in the simvastatin group vs

189 deaths in the placebo group). There was no statistically significant difference between groups in non-cardiovascular mortality.

- Simvastatin significantly reduced the risk for the secondary composite endpoint (time to first occurrence of CHD death, definite or probable hospital verified non-fatal MI, silent MI verified by ECG, or resuscitated cardiac arrest) by 34% ( $p < 0.00001$ , 431 vs 622 patients with one or more events). Simvastatin reduced the risk of major coronary events to a similar extent across the range of baseline total and LDL cholesterol levels. The risk of having a hospital-verified non-fatal MI was reduced by 37%.
- Simvastatin significantly reduced the risk for undergoing myocardial revascularization procedures (coronary artery bypass grafting or percutaneous transluminal coronary angioplasty) by 37% ( $p < 0.00001$ , 252 vs 383 patients).
- Simvastatin significantly reduced the risk of fatal plus non-fatal cerebrovascular events (combined stroke and transient ischemic attacks) by 28% ( $p = 0.033$ , 75 vs 102 patients).
- Over the course of the study, treatment with simvastatin led to mean reductions in total-C, LDL-C and triglycerides (TG) of 25%, 35%, and 10%, respectively, and a mean increase in high-density lipoprotein cholesterol (HDL-C) of 8%. In contrast, treatment with placebo led to increases in total-C, LDL-C and TG of 1%, 1%, and 7%, respectively.
- Because there were only 53 female deaths (approximately 18% of the study population was female), the effect of simvastatin on mortality in women could not be adequately assessed. However, simvastatin significantly reduced the risk of having major coronary events in women by 34% (60 vs 91 women with one or more event).
- Simvastatin resulted in similar decreases in relative risk for total mortality, CHD mortality, and major coronary events in geriatric patients ( $\geq 65$  years) compared with younger adults.

The Heart Protection Study (Study HPS) was a randomized, placebo-controlled, double-blind, multi-centered study with a mean duration of 5 years conducted in 10,269 patients on simvastatin 40 mg and 10,267 on placebo. Patients had a mean age of 64 years (range 40 to 80 years old), 97% were white, and were at high risk of developing a major coronary event because of existing CHD (65%), diabetes (Type 2, 26%; Type 1, 3%), history of stroke or other cerebrovascular disease (16%), peripheral vascular disease (33%), or they were males  $\geq 65$  years with hypertension in (6%). At baseline:

- 3,421 patients (17%) had LDL-C levels below 100 mg/dL, including 953 (5%) below 80 mg/dL; and
- 10,047 patients (49%) had levels greater than 130 mg/dL.

Patients were randomized to simvastatin or placebo using a covariate adaptive method which considered the distribution of 10 important baseline characteristics of patients already enrolled.

The Study HPS results showed that simvastatin 40 mg/day significantly reduced: total and CHD mortality; and non-fatal MI, stroke, and revascularization procedures (coronary and non-coronary) (see Table 5).

**Table 5: CHD Mortality and Cardiovascular Events in Adult Patients with High Risk of Developing a Major Coronary Event in Study HPS**

End Point	Simvastatin(N=10,269) n (%) *	Placebo (N=10,267) n (%) *	Risk Reduction (%) (95% CI)	p-Value
<b>Primary</b>				
Mortality	1,328 (12.9%)	1,507 (14.7%)	13 % (6-19%)	$p = 0.0003$
CHD mortality	587 (5.7%)	707 (6.9%)	18 % (8-26%)	$p = 0.0005$
<b>Secondary</b>				
Non-fatal MI	357 (3.5%)	574 (5.6%)	38 % (30-46%)	$p < 0.0001$
Stroke	444 (4.3%)	585 (5.7%)	25% (15-34%)	$p < 0.0001$
<b>Tertiary</b>				
Coronary revascularization	513 (5%)	725 (7.1%)	30% (22-38%)	$p < 0.0001$

Peripheral and other non-coronary revascularization	450 (4.4%)	532 (5.2%)	16% (5-26%)	p=0.006
---	------------	------------	-------------	---------

\* n = number of patients with indicated event

Two composite endpoints were defined to have enough events to assess relative risk reductions across a range of baseline characteristics:

- Major coronary events (MCE) was comprised of CHD mortality and non-fatal MI. Analyzed by time-to-first event; 898 patients (8.7%) treated with simvastatin had events and 1,212 patients (11.8%) treated with placebo had events.
- Major vascular events (MVE) was comprised of MCE, stroke, and revascularization procedures including coronary, peripheral and other non-coronary procedures. Analyzed by time-to-first event; 2,033 patients (19.8%) treated with simvastatin had events and 2,585 patients (25.2%) on placebo had events.

Simvastatin use led to significant relative risk reductions for both composite endpoints (27% for MCE and 24% for MVE, p<0.0001) and for all components of the composite endpoints. The risk reductions produced by simvastatin in both MCE and MVE were evident and consistent regardless of cardiovascular disease related medical history at study entry (i.e., CHD alone; or peripheral vascular disease, cerebrovascular disease, diabetes or treated hypertension, with or without CHD), gender, age, baseline levels of LDL-C, baseline concomitant cardiovascular medications (i.e., aspirin, beta blockers, or calcium channel blockers), smoking status, or obesity. Patients with diabetes showed risk reductions for MCE and MVE due to simvastatin treatment regardless of baseline HbA1c levels or obesity.

#### Primary Hyperlipidemia in Adults

The effects of simvastatin on total-C and LDL-C were assessed in controlled clinical studies in adult patients with heterozygous familial and non-familial forms of hyperlipidemia and in mixed hyperlipidemia. Simvastatin significantly decreased total-C, LDL-C, and TG, and increased HDL-C (see Table 6). Maximal to near maximal response was generally achieved within 4 to 6 weeks and maintained during chronic therapy.

**Table 6: Mean changes in Lipid level in Adult Patients with Primary Hyperlipidemia and Combined (mixed) Hyperlipidemia (Mean Percent Change from Baseline After 6 to 24 Weeks)**

TREATMENT	N	TOTAL-C	LDL-C	HDL-C	TG *
<b>Lower Dosage Comparative Study † (Mean % Change at Week 6)</b>					
Simvastatin 5 mg once at night	109	-19%	-26%	+10%	-12%
Simvastatin 10 mg once at night	110	-23%	-30%	+12%	-15%
<b>Scandinavian simvastatin Survival Study ‡ (Mean % Change at Week 6)</b>					
Placebo	2223	-1%	-1%	0%	-2%
Simvastatin 20 mg once at night	2221	-28%	-38%	+8%	-19%
<b>Upper Dosage Comparative Study § ( Mean % Change Averaged at Weeks 18 and 24)</b>					
Simvastatin 40 mg once at night	433	-31%	-41%	+9%	-18%

Simvastatin 80 mg once at night. †	664	-36%	-47%	+8%	-24%
<b>Combined Hyperlipidemia Study # (Mean % Change at Week 6)</b>					
Placebo	125	1%	2%	+3%	-4%
Simvastatin 40 mg once at night	123	-25%	-29%	+13%	-28%
Simvastatin 80 mg once at night	124	-31	-36%	+16%	-33%

\* median percent change

† mean baseline LDL-C = 244 mg/dL and median baseline TG = 168 mg/dL

‡ mean baseline LDL-C = 188 mg/dL and median baseline TG = 128 mg/dL

§ mean baseline LDL-C = 226 mg/dL and median baseline TG = 156 mg/dL

¶ 21% and 36% median reduction in TG in patients with TG ≤200 mg/dL and TG >200 mg/dL, respectively. Patients with TG >350 mg/dL were excluded

# mean baseline LDL-C = 156 mg/dL and median baseline TG = 391 mg/dL.

#### Hypertriglyceridemia in Adults

The results of a subgroup analysis in 74 adult patients with hypertriglyceridemia from a 130-patient, double-blind, placebo-controlled, 3-period crossover study are similar to those presented in Table 6 for the Combined Hyperlipidemia Study. Simvastatin decreased TC, LDL-C, and TG in these patients.

#### Dysbetalipoproteinemia in Adults

The results of a subgroup analysis in 7 adult patients with dysbetalipoproteinemia (apo E2/2) (very-low-density lipoprotein cholesterol [VLDL-C]/TG>0.25) from a 130-patient, double-blind, placebo-controlled, 3-period crossover study are presented in Table 7. Simvastatin decreased total-C, LDL-C + intermediate-density lipoprotein (IDL), VLDL-C + IDL, and TG compared to placebo.

**Table 7: Lipid Effects in Adult Patients with Dysbetalipoproteinemia Over Six Weeks [Median Percent Change (min, max) from Baseline] \***

TREATMENT	N	Total-C	LDL-C + IDL	HDL-C	TG	VLDL-C+IDL	Non-HDL-C
Placebo	7	-8% (-24, +34)	-8% (-27, +23)	-2% (-21, +16)	+4% (-22, +90)	-4% (-28, +78)	-8% (-26, -39)
Simvastatin 40 mg/day	7	-50% (-66, -39)	-50% (-60, -31)	+7% (-8, +23)	-41% (-74, -16)	-58% (-90, -37)	-57% (-72, -44)
Simvastatin 80 mg/day	7	-52% (-55, -41)	-51% (-57, -28)	+7% (-5, +29)	-38% (-58, +2)	-60% (-72, -39)	-59% (-61, -46)

\* The median baseline values (mg/dL) were: total-C = 324, LDL-C = 121, HDL-C = 31, TG = 411, VLDL-C = 170, and non-HDL-C = 291.

#### Homozygous Familial Hypercholesterolemia

In a controlled clinical study, 12 patients 15 to 39 years of age with homozygous familial hypercholesterolemia (HoFH) received simvastatin 40 mg/day in a single dose, or 80 mg/day in 3 divided doses. In 12 patients the mean LDL-C changes at 9 weeks for the 40- and 80-mg doses were -13.7% (range -22.5% to -4.9%) and -24.6% (range -37.3%

to -11.9%), respectively.

**Pediatric Patients 10 Years of Age and Older with HeFH**

In a double-blind, placebo-controlled study, 175 pediatric patients (99 boys and 76 post-menarchal girls) 10 years of age and older (mean age 14 years old) with heterozygous familial hypercholesterolemia (HeFH) were randomized to simvastatin (n=106) or placebo (n=67) for 24 weeks (base study). To be included in the study, patients were required to have a baseline LDL-C level between 160 and 400 mg/dL and at least one parent with an LDL-C level >189 mg/dL. The dosage of simvastatin (once daily in the evening) was 10 mg for the first 8 weeks, 20 mg for the second 8 weeks, and 40 mg thereafter. In a 24-week extension, 144 patients elected to continue therapy with simvastatin 40 mg or placebo.

Simvastatin significantly decreased plasma levels of total-C, LDL-C, and apolipoprotein B (ApoB) (see Table 8) in the HeFH study. Results from the extension at 48 weeks were comparable to the results at Week 24.

The safety and effectiveness of dosages above 40 mg daily have not been studied in pediatric patients with HeFH. The long-term efficacy of simvastatin therapy in pediatric patients to reduce morbidity and mortality in adulthood has not been established.

**Table 8: Lipid Effects in Pediatric Patients 10 Years of Age and Older with Heterozygous Familial Hypercholesterolemia (Mean Percent Change from Baseline)**

Dosage	Duration	N		Total-C	LDL-C	HDL-C	TG*	ApoB
Placebo	24 Weeks	67	% Change from Baseline (95% CI)	+1.6% (-2.2, 5.3)	+1.1% (-3.4, 5.5)	+3.6% (-0.7, 8.0)	-3.2% (-11.8, 5.4)	-0.5% (-4.7, 3.6)
			Mean baseline, mg/dL (SD)	279 (52)	212 (49)	47 (12)	90 (51)	186 (38)
Simvastatin	24 Weeks	106	% Change from Baseline (95% CI)	-26.5% (-29.6, -23.3)	-36.8% (-40.5,-33.0)	+8.3% (4.6, 11.9)	-7.9% (-15.8, 0.0)	-32.4% (-35.9,-29.0)
			Mean baseline, mg/dL (SD)	270 (44)	204 (42)	48 (9)	78 (46)	180 (34)

\* median percent change

**16 HOW SUPPLIED/STORAGE AND HANDLING**

Simvastatin tablets USP, 5 mg are yellow colored, oval shaped, film coated tablet, debossed with 'H' on one side and '16' on other side. They are supplied as follows:

Bottles of 90 (NDC 82009-012-90)

Bottles of 1000 (NDC 82009-012-10)

Simvastatin tablets USP, 10 mg are pink colored, oval shaped, film coated tablet, debossed with 'H' on one side and '17' on other side. They are supplied as follows:

Bottles of 1000 (NDC 82009-013-10)

Simvastatin tablets USP, 20 mg are brown colored, oval shaped, film coated tablet, debossed with 'H' on one side and '18' on other side. They are supplied as follows:

Bottles of 1000 (NDC 82009-014-10)

Simvastatin tablets USP, 40 mg are brick red colored, oval shaped, film coated tablet, debossed with 'H' on one side and '19' on other side. They are supplied as follows:

Bottles of 1000 (NDC 82009-015-10)

Simvastatin tablets USP, 80 mg are brick red capsule shaped, film coated tablet, debossed with 'H' on one side and '20' on other side. They are supplied as follows:

Bottles of 500 (NDC 82009-016-05)

#### Storage

Store at 20° to 25°C (68° to 77°F) [see USP Controlled Room Temperature].

Dispense in a tightly closed container.

## **17 PATIENT COUNSELING INFORMATION**

### *Myopathy and Rhabdomyolysis*

Advise patients that simvastatin may cause myopathy and rhabdomyolysis. Inform patients taking the 80 mg daily dose of simvastatin that they are at an increased risk. Inform patients that the risk is also increased when taking certain types of medication or consuming grapefruit juice and they should discuss all medication, both prescription and over the counter, with their healthcare provider. Instruct patients to inform other healthcare providers prescribing a new medication or increasing the dose of an existing medication that they are taking simvastatin. Instruct patients to promptly report any unexplained muscle pain, tenderness or weakness particularly if accompanied by malaise or fever [see *Contraindications ( 4), Warnings and Precautions ( 5.1), and Drug Interactions ( 7.1)*].

### *Hepatic Dysfunction*

Inform patients that simvastatin may cause liver enzyme elevations and possibly liver failure. Advise patients to promptly report fatigue, anorexia, right upper abdominal discomfort, dark urine or jaundice [see *Warnings and Precautions ( 5.3)*].

### *Increases in HbA1c and Fasting Serum Glucose Levels*

Inform patients that increases in HbA1c and fasting serum glucose levels may occur with simvastatin. Encourage patients to optimize lifestyle measures, including regular exercise, maintaining a healthy body weight, and making healthy food choices [see *Warnings and Precautions ( 5.4)*].

### *Pregnancy*

Advise pregnant patients and patients who can become pregnant of the potential risk to a fetus. Advise patients to inform their healthcare provider of a known or suspected pregnancy to discuss if simvastatin should be discontinued [see *Use in Specific Populations ( 8.1)*].

### *Lactation*

Advise patients that breastfeeding is not recommended during treatment with simvastatin [see *Use in Specific Populations ( 8.2)*].

Manufactured for:

**Qualient Pharmaceuticals Health LLC**

20 Genesis Close

Grand Cayman KY1-1208

Cayman Islands

by: **HETERO™**

Hetero Labs Limited

Jeedimetla, Hyderabad - 500 055, India

Revised: 04/2022

**PACKAGE LABEL.PRINCIPAL DISPLAY PANEL**

**Simvastatin tablets 5mg 90s container label**

**Quallent**  
Pharmaceuticals<sup>SM</sup>

NDC 82009-012-90

**Simvastatin  
Tablets, USP**

**5 mg**

Rx Only      **90 Tablets**

Each film coated tablet contains:  
Simvastatin USP 5 mg

**USUAL DOSAGE:** see package insert for dosage and administration.

Store at 20° to 25°C (68° to 77°F) [see USP Controlled Room Temperature].

Dispense in a tight, light-resistant container as defined in the USP using a child-resistant closure.

Manufactured for:  
Quallent Pharmaceuticals Health LLC  
20 Genesis Close  
Grand Cayman KY1-1208  
Cayman Islands

By: **HETERO™**  
Hetero Labs Limited,  
Jeedimetla, Hyderabad - 500 055, India.

3 N  
8 2 0 0 9 1 0 1 2 9 0 1 2

Mfg. Lic. No.: 22/RR/AP/2001/F/R      2066962

**43 x 25 mm  
Un Varnish Area**

**Simvastatin tablets 5mg 1000s container label**

**Quallent**  
Pharmaceuticals<sup>SM</sup>

NDC 82009-012-10

**Simvastatin  
Tablets, USP**

**5 mg**

Rx Only      **1000 Tablets**

Each film coated tablet contains:  
Simvastatin USP 5 mg

**USUAL DOSAGE:** see package insert for dosage and administration.

Store at 20° to 25°C (68° to 77°F) [see USP Controlled Room Temperature].

Dispense in a tight, light-resistant container as defined in the USP using a child-resistant closure.

Manufactured for:  
Quallent Pharmaceuticals Health LLC  
20 Genesis Close  
Grand Cayman KY1-1208  
Cayman Islands

By: **HETERO™**  
Hetero Labs Limited,  
Jeedimetla, Hyderabad - 500 055, India.

3 N  
8 2 0 0 9 1 0 1 2 1 0 1 0

Mfg. Lic. No.: 22/RR/AP/2001/F/R      2066961

**43 x 35 mm  
Un Varnish Area**

**Simvastatin tablets 10mg 1000s container label**

**Quallent**  
Pharmaceuticals<sup>SM</sup>

NDC 82009-013-10

**Simvastatin  
Tablets, USP**

**10 mg**

Rx Only      **1000 Tablets**

Each film coated tablet contains:  
Simvastatin USP 10 mg

**USUAL DOSAGE:** see package insert for dosage and administration.

Store at 20° to 25°C (68° to 77°F) [see USP Controlled Room Temperature].

Dispense in a tight, light-resistant container as defined in the USP using a child-resistant closure.

Manufactured for:  
Quallent Pharmaceuticals Health LLC  
20 Genesis Close  
Grand Cayman KY1-1208  
Cayman Islands

By: **HETERO™**  
Hetero Labs Limited,  
Jeedimetla, Hyderabad - 500 055, India.


3 N  
8 2 0 0 9 1 0 1 3 1 0 1 7

Mfg. Lic. No.: 22/RR/AP/2001/F/R      2066960

**43 x 35 mm  
Un Varnish Area**

**Simvastatin tablets 20mg 1000s container label**





**Quallent**  
Pharmaceuticals<sup>SM</sup>

NDC 82009-014-10

**Simvastatin  
Tablets, USP**  
**20 mg**

Rx Only      **1000 Tablets**

Each film coated tablet contains:  
Simvastatin USP 20 mg

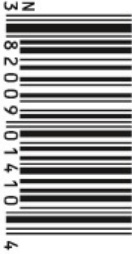
**USUAL DOSAGE:** see package insert  
for dosage and administration.

Store at 20° to 25°C (68° to 77°F)  
[see USP Controlled Room Temperature].

Dispense in a tight, light-resistant  
container as defined in the USP using  
a child-resistant closure.

Manufactured for:  
**Quallent Pharmaceuticals Health LLC**  
20 Genesis Close  
Grand Cayman KY1-1208  
Cayman Islands

Mfg. Lic. No.: 22/RR/AP/2001/F/R



3 82009 101410 4

**55 x 40 mm  
Un Varnish Area**

2066959

By: **HETERO™**  
Hetero Labs Limited,  
Jeedimetla, Hyderabad - 500 055, India.

### Simvastatin tablets 40mg 1000s container label



**Quallent**  
Pharmaceuticals<sup>SM</sup>

NDC 82009-015-10

**Simvastatin  
Tablets, USP**  
**40 mg**

Rx Only      **1000 Tablets**

Each film coated tablet contains:  
Simvastatin USP 40 mg

**USUAL DOSAGE:** see package insert  
for dosage and administration.

Store at 20° to 25°C (68° to 77°F)  
[see USP Controlled Room Temperature].

Dispense in a tight, light-resistant  
container as defined in the USP using  
a child-resistant closure.

Manufactured for:  
**Quallent Pharmaceuticals Health LLC**  
20 Genesis Close  
Grand Cayman KY1-1208  
Cayman Islands

Mfg. Lic. No.: 22/RR/AP/2001/F/R




3 82009 101510 1

**60 x 45 mm  
Un Varnish Area**

2066958

By: **HETERO™**  
Hetero Labs Limited,  
Jeedimetla, Hyderabad - 500 055,  
India.

### Simvastatin tablets 80mg 500s container label



**Quallent**  
Pharmaceuticals<sup>SM</sup>

NDC 82009-016-05

**Simvastatin  
Tablets, USP**  
**80 mg**

Rx Only      **500 Tablets**

Each film coated tablet contains:  
Simvastatin USP 80 mg

**USUAL DOSAGE:** see package  
insert for dosage and administration.


Store at 20° to 25°C (68° to 77°F)  
[see USP Controlled Room  
Temperature].

Dispense in a tight, light-resistant  
container as defined in the USP  
using a child-resistant closure.

Manufactured for:  
**Quallent Pharmaceuticals Health LLC**  
20 Genesis Close  
Grand Cayman KY1-1208  
Cayman Islands

By: **HETERO™**  
Hetero Labs Limited,  
Jeedimetla, Hyderabad - 500 055,  
India.

Mfg. Lic. No.: 22/RR/AP/2001/F/R



3 82009 101605 4

**50 x 35 mm  
Un Varnish Area**

2068981

## SIMVASTATIN

simvastatin tablet, film coated

### Product Information

<b>Product Type</b>	HUMAN PRESCRIPTION DRUG	<b>Item Code (Source)</b>	NDC:82009-012
<b>Route of Administration</b>	ORAL		

**Active Ingredient/Active Moiety**

Ingredient Name		Basis of Strength	Strength	
SIMVASTATIN (UNII: AGG2FN16EV) (SIMVASTATIN - UNII:AGG2FN16EV)		SIMVASTATIN	5 mg	
<b>Inactive Ingredients</b>				
Ingredient Name		Strength		
ASCORBIC ACID (UNII: PQ6CK8PD0R)				
BUTYLATED HYDROXYANISOLE (UNII: REK4960K2U)				
CITRIC ACID MONOHYDRATE (UNII: 2968PHW8QP)				
HYDROXYPROPYL CELLULOSE (1600000 WAMW) (UNII: RFW2ET671P)				
HYPROMELLOSES (UNII: 3NXW29V3WO)				
FERRIC OXIDE YELLOW (UNII: EX438O2MRT)				
ISOPROPYL ALCOHOL (UNII: ND2M416302)				
LACTOSE MONOHYDRATE (UNII: EWQ57Q8I5X)				
MAGNESIUM STEARATE (UNII: 70097M6I30)				
CELLULOSE, MICROCRYSTALLINE (UNII: OP1R32D61U)				
STARCH, CORN (UNII: O8232NY3S)				
TALC (UNII: 7SEV7J4R1U)				
TITANIUM DIOXIDE (UNII: 15FIX9V2JP)				
<b>Product Characteristics</b>				
Color	yellow	Score	no score	
Shape	OVAL	Size	6mm	
Flavor		Imprint Code	H;16	
Contains				
<b>Packaging</b>				
#	Item Code	Package Description	Marketing Start Date	Marketing End Date
1	NDC:82009-012-90	90 in 1 BOTTLE; Type 0: Not a Combination Product	05/26/2022	
2	NDC:82009-012-10	1000 in 1 BOTTLE; Type 0: Not a Combination Product	05/26/2022	
<b>Marketing Information</b>				
Marketing Category	Application Number or Monograph Citation	Marketing Start Date	Marketing End Date	
ANDA	ANDA200895	05/26/2022		

## SIMVASTATIN

simvastatin tablet, film coated

Product Information			
Product Type	HUMAN PRESCRIPTION DRUG	Item Code (Source)	NDC:82009-013
Route of Administration	ORAL		
Active Ingredient/Active Moiety			
Ingredient Name		Basis of Strength	Strength
SIMVASTATIN (UNII: AGG2FN16EV) (SIMVASTATIN - UNII:AGG2FN16EV)		SIMVASTATIN	10 mg
Inactive Ingredients			

Ingredient Name	Strength
ASCORBIC ACID (UNII: PQ6CK8PD0R)	
BUTYLATED HYDROXYANISOLE (UNII: REK4960K2U)	
CITRIC ACID MONOHYDRATE (UNII: 2968PHW8QP)	
HYDROXYPROPYL CELLULOSE (1600000 WAMW) (UNII: RFW2ET671P)	
HYPROMELLOSES (UNII: 3NXW29V3WO)	
FERRIC OXIDE YELLOW (UNII: EX438O2MRT)	
ISOPROPYL ALCOHOL (UNII: ND2M416302)	
LACTOSE MONOHYDRATE (UNII: EWQ57Q8I5X)	
MAGNESIUM STEARATE (UNII: 70097M6I30)	
CELLULOSE, MICROCRYSTALLINE (UNII: OP1R32D61U)	
STARCH, CORN (UNII: O8232NY3SJ)	
TALC (UNII: 7SEV7J4R1U)	
TITANIUM DIOXIDE (UNII: 15FIX9V2JP)	
FERRIC OXIDE RED (UNII: 1K09F3G675)	

### Product Characteristics

Color	pink	Score	no score
Shape	OVAL	Size	9mm
Flavor		Imprint Code	H;17
Contains			

### Packaging

#	Item Code	Package Description	Marketing Start Date	Marketing End Date
1	NDC:82009-013-10	1000 in 1 BOTTLE; Type 0: Not a Combination Product	05/26/2022	

### Marketing Information

Marketing Category	Application Number or Monograph Citation	Marketing Start Date	Marketing End Date
ANDA	ANDA200895	05/26/2022	

## SIMVASTATIN

simvastatin tablet, film coated

### Product Information

Product Type	HUMAN PRESCRIPTION DRUG	Item Code (Source)	NDC:82009-014
Route of Administration	ORAL		

### Active Ingredient/Active Moiety

Ingredient Name	Basis of Strength	Strength
SIMVASTATIN (UNII: AGG2FN16EV) (SIMVASTATIN - UNII:AGG2FN16EV)	SIMVASTATIN	20 mg

### Inactive Ingredients

Ingredient Name	Strength
ASCORBIC ACID (UNII: PQ6CK8PD0R)	
BUTYLATED HYDROXYANISOLE (UNII: REK4960K2U)	
CITRIC ACID MONOHYDRATE (UNII: 2968PHW8QP)	
HYDROXYPROPYL CELLULOSE (1600000 WAMW) (UNII: RFW2ET671P)	
HYPROMELLOSES (UNII: 3NXW29V3WO)	

<b>FERRIC OXIDE YELLOW</b> (UNII: EX438O2MRT)
<b>ISOPROPYL ALCOHOL</b> (UNII: ND2M416302)
<b>LACTOSE MONOHYDRATE</b> (UNII: EWQ57Q8I5X)
<b>MAGNESIUM STEARATE</b> (UNII: 70097M6I30)
<b>CELLULOSE, MICROCRYSTALLINE</b> (UNII: OP1R32D61U)
<b>STARCH, CORN</b> (UNII: O8232NY3SJ)
<b>TALC</b> (UNII: 7SEV7J4R1U)
<b>TITANIUM DIOXIDE</b> (UNII: 15FIX9V2JP)
<b>FERRIC OXIDE RED</b> (UNII: 1K09F3G675)

### Product Characteristics

<b>Color</b>	brown	<b>Score</b>	no score
<b>Shape</b>	OVAL	<b>Size</b>	12mm
<b>Flavor</b>		<b>Imprint Code</b>	H;18
<b>Contains</b>			

### Packaging

#	Item Code	Package Description	Marketing Start Date	Marketing End Date
1	NDC:82009-014-10	1000 in 1 BOTTLE; Type 0: Not a Combination Product	05/26/2022	

### Marketing Information

Marketing Category	Application Number or Monograph Citation	Marketing Start Date	Marketing End Date
ANDA	ANDA200895	05/26/2022	

## SIMVASTATIN

simvastatin tablet, film coated

### Product Information

<b>Product Type</b>	HUMAN PRESCRIPTION DRUG	<b>Item Code (Source)</b>	NDC:82009-015
<b>Route of Administration</b>	ORAL		

### Active Ingredient/Active Moiety

Ingredient Name	Basis of Strength	Strength
<b>SIMVASTATIN</b> (UNII: AGG2FN16EV) (SIMVASTATIN - UNII:AGG2FN16EV)	SIMVASTATIN	40 mg

### Inactive Ingredients

Ingredient Name	Strength
<b>ASCORBIC ACID</b> (UNII: PQ6CK8PD0R)	
<b>BUTYLATED HYDROXYANISOLE</b> (UNII: REK4960K2U)	
<b>CITRIC ACID MONOHYDRATE</b> (UNII: 2968PHW8QP)	
<b>HYDROXYPROPYL CELLULOSE (1600000 WAMW)</b> (UNII: RFW2ET671P)	
<b>HYPROMELLOSES</b> (UNII: 3NXW29V3WO)	
<b>FERRIC OXIDE YELLOW</b> (UNII: EX438O2MRT)	
<b>ISOPROPYL ALCOHOL</b> (UNII: ND2M416302)	
<b>LACTOSE MONOHYDRATE</b> (UNII: EWQ57Q8I5X)	
<b>MAGNESIUM STEARATE</b> (UNII: 70097M6I30)	
<b>CELLULOSE, MICROCRYSTALLINE</b> (UNII: OP1R32D61U)	
<b>STARCH, CORN</b> (UNII: O8232NY3SJ)	

<b>TALC</b> (UNII: 7SEV7J4R1U)				
<b>TITANIUM DIOXIDE</b> (UNII: 15FIX9V2JP)				
<b>FERRIC OXIDE RED</b> (UNII: 1K09F3G675)				
<b>Product Characteristics</b>				
<b>Color</b>	red (Brick Red)	<b>Score</b>	no score	
<b>Shape</b>	OVAL	<b>Size</b>	14mm	
<b>Flavor</b>		<b>Imprint Code</b>	H;19	
<b>Contains</b>				
<b>Packaging</b>				
<b>#</b>	<b>Item Code</b>	<b>Package Description</b>	<b>Marketing Start Date</b>	<b>Marketing End Date</b>
1	NDC:82009-015-10	1000 in 1 BOTTLE; Type 0: Not a Combination Product	05/26/2022	
<b>Marketing Information</b>				
<b>Marketing Category</b>	<b>Application Number or Monograph Citation</b>	<b>Marketing Start Date</b>	<b>Marketing End Date</b>	
ANDA	ANDA200895	05/26/2022		

## SIMVASTATIN

simvastatin tablet, film coated

<b>Product Information</b>			
<b>Product Type</b>	HUMAN PRESCRIPTION DRUG	<b>Item Code (Source)</b>	NDC:82009-016
<b>Route of Administration</b>	ORAL		
<b>Active Ingredient/Active Moiety</b>			
<b>Ingredient Name</b>		<b>Basis of Strength</b>	<b>Strength</b>
SIMVASTATIN (UNII: AGG2FN16EV) (SIMVASTATIN - UNII:AGG2FN16EV)		SIMVASTATIN	80 mg
<b>Inactive Ingredients</b>			
<b>Ingredient Name</b>			<b>Strength</b>
ASCORBIC ACID (UNII: PQ6CK8PD0R)			
BUTYLATED HYDROXYANISOLE (UNII: REK4960K2U)			
CITRIC ACID MONOHYDRATE (UNII: 2968PHW8QP)			
HYDROXYPROPYL CELLULOSE (160000 WAMW) (UNII: RFW2ET671P)			
HYPROMELLOSES (UNII: 3NXW29V3WO)			
FERRIC OXIDE YELLOW (UNII: EX438O2MRT)			
ISOPROPYL ALCOHOL (UNII: ND2M416302)			
LACTOSE MONOHYDRATE (UNII: EWQ57Q8I5X)			
MAGNESIUM STEARATE (UNII: 70097M6I30)			
CELLULOSE, MICROCRYSTALLINE (UNII: OP1R32D61U)			
STARCH, CORN (UNII: O8232NY3SJ)			
TALC (UNII: 7SEV7J4R1U)			
TITANIUM DIOXIDE (UNII: 15FIX9V2JP)			
FERRIC OXIDE RED (UNII: 1K09F3G675)			
<b>Product Characteristics</b>			

<b>Color</b>	red (Brick Red)	<b>Score</b>	no score
<b>Shape</b>	OVAL ((Capsules shaped))	<b>Size</b>	18mm
<b>Flavor</b>		<b>Imprint Code</b>	H;20
<b>Contains</b>			

### Packaging

#	Item Code	Package Description	Marketing Start Date	Marketing End Date
1	NDC:82009-016-05	500 in 1 BOTTLE; Type 0: Not a Combination Product	05/26/2022	

### Marketing Information

Marketing Category	Application Number or Monograph Citation	Marketing Start Date	Marketing End Date
ANDA	ANDA200895	05/26/2022	

**Labeler** - Quallent Pharmaceuticals Health LLC (815564528)

### Establishment

Name	Address	ID/FEI	Business Operations
Hetero Labs Limited Unit III		676162024	manufacture(82009-012, 82009-013, 82009-014, 82009-015, 82009-016)

Revised: 8/2022

Quallent Pharmaceuticals Health LLC